

**THE CORPORATION OF THE
MUNICIPALITY OF KILLARNEY**

BY-LAW NO. 2020-36

**BEING A BY-LAW OF THE CORPORATION OF THE
MUNICIPALITY OF KILLARNEY TO AUTHORIZE
THE SEASONAL CLOSURE OF SIDEWALKS**

BEING a by-law relating to the seasonal closure of municipal sidewalks.

WHEREAS Section 11 (3) of the Municipal Act 2001, (S.O. 2001 c. 25) as amended, authorizes a municipality to pass by-laws within the jurisdictional sphere of highways, including parking and traffic on highways;

AND WHEREAS Section 5.3 of the Municipal Act 2001, (S.O. 2001 c. 25) authorizes that municipal powers, including municipality's capacity, rights, powers, and privileges under section 9, shall be exercised by by-law unless the municipality is specifically authorized to do otherwise;

AND WHEREAS Section 9 of the Municipal Act 2001, (S.O. 2001 c. 25) provides that municipality has the capacity, rights, powers, and privileges of a natural person for the purpose of exercising its authority under this or any other Act.

NOW THEREFORE THE COUNCIL OF THE CORPORATION OF THE MUNICIPALITY OF KILLARNEY HEREBY ENACTS AS FOLLOWS:

1. That Sidewalks within the Municipality of Killarney as identified in Schedule "A" are hereby closed from November 15 in any given year to April 1 the following year.
2. Every person who uses a sidewalk so closed does so at their own risk and the Municipality is not liable for any damage sustained by a person using the sidewalk so closed to traffic.

***READ A FIRST, AND TAKEN AS READ A SECOND AND THIRD TIME AND
FINALLY PASSED IN OPEN COUNCIL THIS 12th DAY OF NOVEMBER, 2020.***



Nancy Wirtz, Mayor



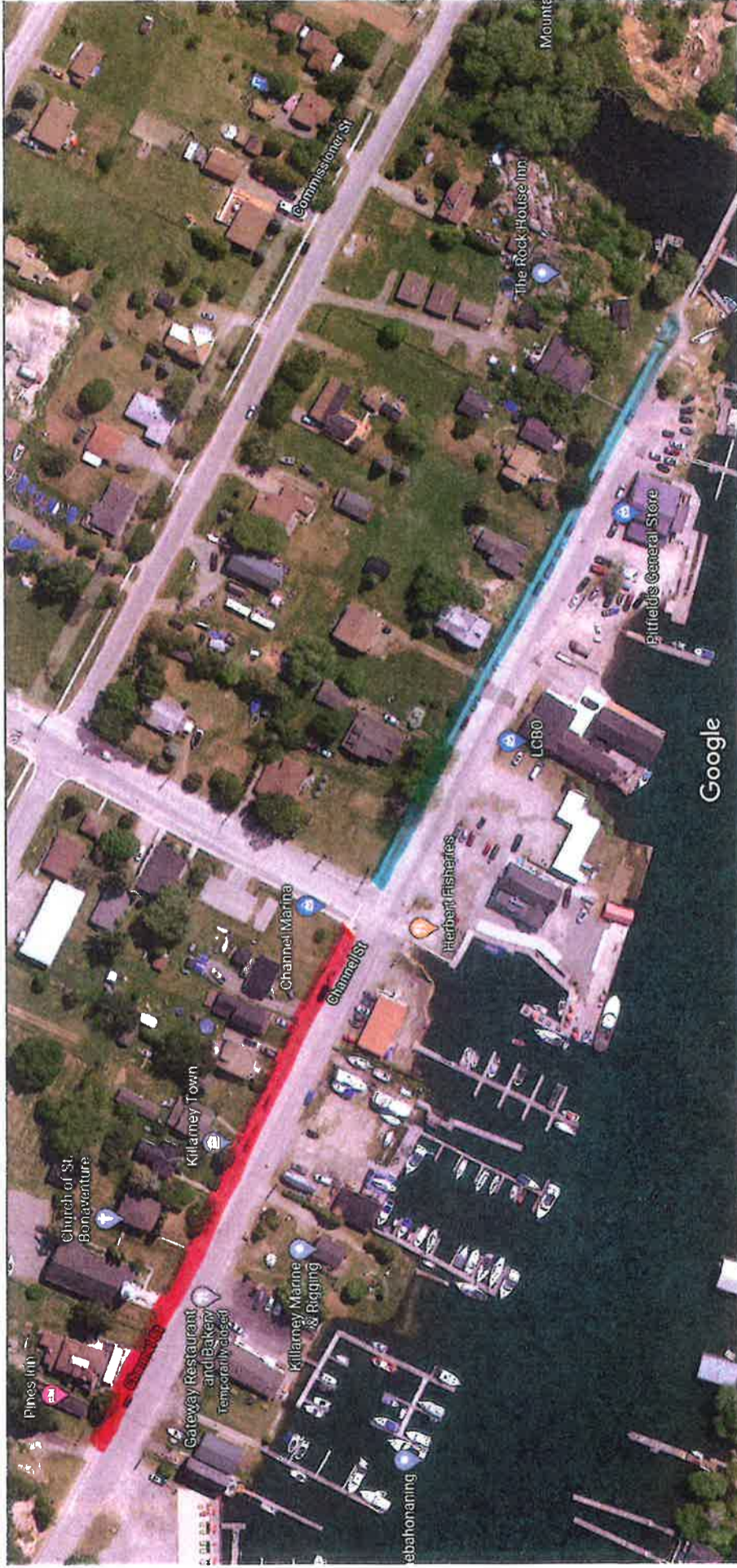
Candy Beauvais, Clerk-Treasurer

**THE CORPORATION OF THE
MUNICIPALITY OF KILLARNEY**

BY-LAW NO. 2020-36



Schedule "A"

<u>Street Name</u>	<u>From</u>	<u>To</u>
Channel Street	4 Channel Street West	Charles Street Intersection
Channel Street	Charles Street Intersection	West to 36 Channel Street
Commissioner Street	8 Commissioner Street	Charles Street Intersection
Commissioner Street	Charles Street Intersection	58 Commissioner Street (Tilley Street Intersection)
Charles Street	Channel Street Intersection	Noble Street Intersection



Imagery ©2020 Google, Imagery ©2020 Maxar Technologies, Map data ©2020 20 m

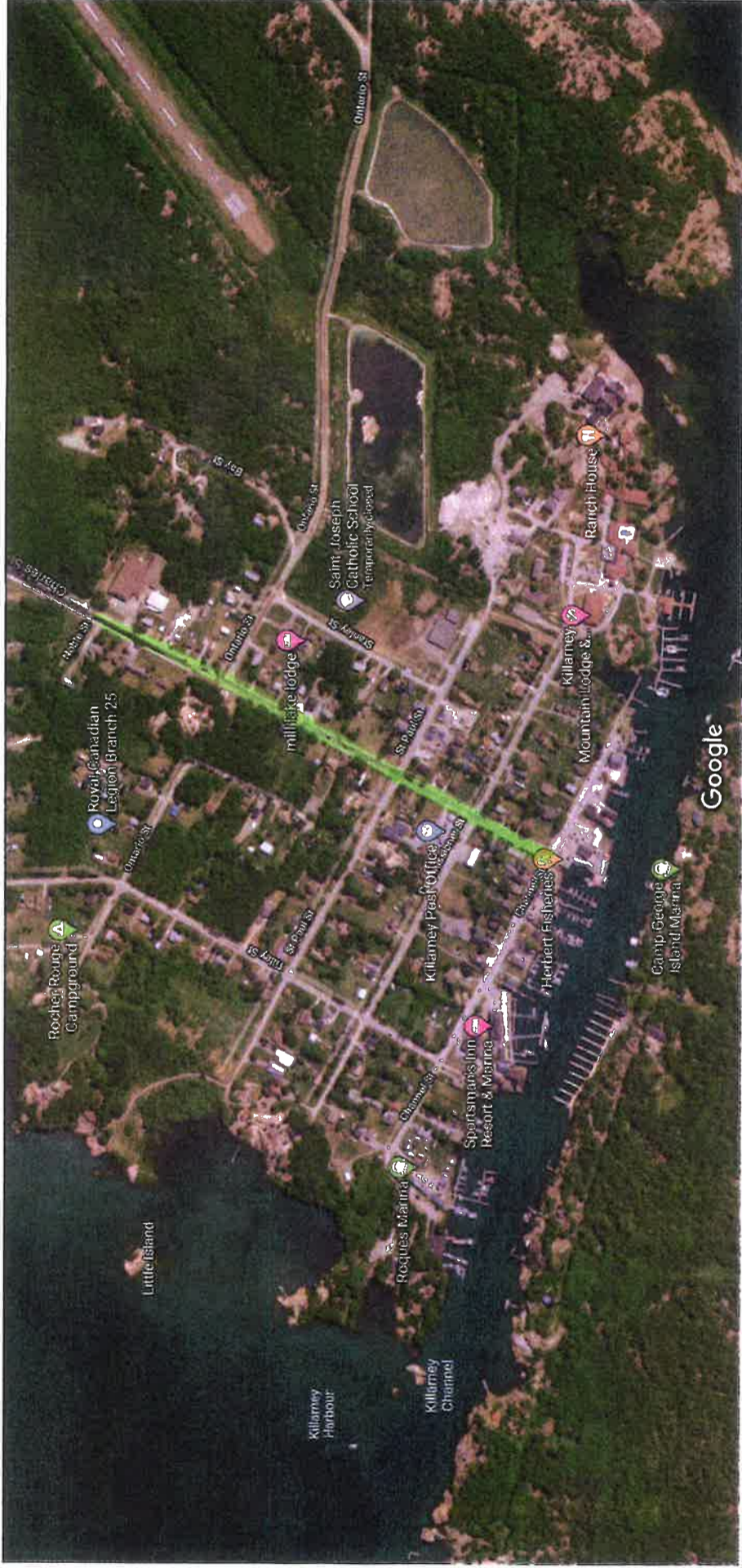
Channel Street

-  4 Channel Street West to Charles Street Intersection
-  Charles Street Intersection, West to 36 Channel Street



Imagery ©2020 Google, Imagery ©2020 Maxar Technologies, Map data ©2020 50 m

- Commissioner Street**
- 1. 8 Commissioner Street to Charles Street Intersection
 - 2. Charles Street Intersection to 58 Commissioner Street (Tilley Street Intersection)



Imagery ©2020 Google, TerraMetrics, Imagery ©2020 CNES / Airbus, Maxar Technologies, Map data ©2020 100 m

Charles Street
1. Channel Street Intersection to Noble Street Intersection